

Pre-Production Planning Document (MONTAGE)

GENERAL INFO

1. Your Name: **Melanie Topchik**
2. PROJECT: **Montage of a place**

CREATIVE BRIEF

1. What must it be?

A cinematic montage

2. Who is it for?

The target audience is people who appreciate nature, rural life, and visual storytelling. It is meant for viewers who enjoy exploring and seeing different, unique environments.

3. How long must it be?

1-5 Minutes

4. What is your objective with the piece?

To create a visually engaging montage that captures the environment of Beaumont Farms, using visual storytelling through specific shots, sound, and composition.

5. When is it due?

November 16th, 2025

6. What is the overall idea?

To capture Beaumont Farms as a family-friendly location with unique seasonal spots perfect for photos and as a welcoming place to enjoy time with loved ones.

7. What is the storyline summary?

The montage will highlight the farm's charm, the seasonal spots that make it special, and the joy of spending time with family and friends in a relaxed, inviting setting.

8. Elevator pitch:

A short cinematic montage showcasing Beaumont Farms as a fun and relaxing place for families, full of seasonal photo opportunities and memorable moments with loved ones.

9. Tagline:

Make memories, capture the seasons, enjoy the farm with those you love.

10. Look and feel description (including "pacing"):

- Warm, inviting, and family-friendly
- Highlights seasonal photo spots like flowers or pumpkins

- Gentle, slower camera movements
- Softer transitions
- Natural warm lighting to help enhance the scenery

QUESTIONS / NOTES

SUBJECT:

1. Why did you choose this location?

Initially, I had a hard time deciding where to film, but I knew I wanted an outdoor location and didn't want to do another project on campus. When I looked up local farms online, this one instantly stood out to me because it has so many unique photo spots and a great variety to pick from. Not to mention entry into the farm is free...

2. Location ideas:

- Fields and greenhouses
- Barn exterior and interior
- Farm animals?
- Wooden fences, farm equipment, other farm details
- Pathways and trees
- Interesting statues
- Farm stand

NARRATION/HOST:

3. Who will lead us through the piece?

I want the story to be told through visuals, sound effects, potentially natural sounds, and background music.

4. Narration ideas:

If I decide to do some type of voiceover work, it will most likely be something reflective and minimal, maybe describing the visuals that are being shown

MUSIC:

1. What is overall "mood" and "feel" of the piece?

Calm, uplifting, and peaceful. Something that feels warm and nostalgic.

2. Music track ideas:

- Acoustic guitar or piano instrumentals
- Gentle folk or ambient cinematic tracks
- Something seasonal sounding (depending on how much fall subjects are shown)

AMBIENT AUDIO:

1. What is the "location" of the piece? If we close our eyes, where should we imagine that we are?

On farmland, or in a rural location. Quiet and calm, but still sounds from the surrounding nature.

2. Ambient audio ideas:

- Birds chirping
- Wind rustling through the grass
- Footsteps on gravel or dirt
- Sound of tractors moving or farmers working
- Animal sounds?

SOUND EFFECTS:

1. What sound effects (SFX) would help tell this story? Why?

Soft, realistic sounds that make the environment feel more alive. I want viewers (and listeners) to feel as if they can close their eyes and be there too.

2. SFX ideas:

- Hooves on dirt
- Fence gate creak
- Gentle breeze or leaves rustling
- Birds chirping
- Footsteps walking through the grass
- Sound of tractors

PERMISSIONS:

1. Am I allowed to film here? Do I need permission and/or a permit?

Yes, usually they do not have many people working except for a couple who were okay with me filming. I told them I would be back next week for filming, and they are OK with it.

2. Will any people be in my shots? Do I need permission and/or release forms?

I will not be including people in my shots.

GENERAL:

1. What gear do I need to pack and bring with me for the shoot? Film gear, sunscreen, water, etc.

Camera, tripod, SD cards, phone, water, jacket, and farm-appropriate clothing.

2. How will I transport everything and keep it safe?

In my car, carefully, with all equipment in the protective cases they come in.

3. Are there any potential hazards or complications at this location?

Uneven ground, animal areas, and weather conditions. I'll wear appropriate shoes and stay aware of my surroundings.

SCRIPT

Name: Melanie Topchik

Title: Moments at Beaumont Farms

<u>VIDEO</u>	<u>AUDIO</u>
EXT. BEAUMONT FARMS - AFTERNOON	(Fade in ambient audio - gentle breeze)
WS Farm entrance with barn and open fields	Soft acoustic or folk instrumental begins
WS and CUs of the Beaumont Farms sign or pathway leading in	(Music continues)
WS row of outdoor statues displayed throughout the property	(Ambient: faint wind, rustling leaves)
CU pans across a unique statue or garden decoration	SFX: distant birds, camera shutter clicks
WS greenhouse exterior surrounded by land	(Music slightly changes audio levels)
INT. GREENHOUSE - DAY	(Ambient: gentle hum, leaves brushing, soft footsteps on gravel)
CU rows of plants and flowers in the sunlight	SFX: faint watering sounds, wind through glass panels)
ECU water droplets on leaves or sun shining through greenhouse panels	Music slows slightly, soft guitar or piano)
WS transition to mini farmers market entrance	(Ambient continues, peaceful tone)
INT. FARMERS MARKET - DAY	Music picks up slightly
CU baskets of fresh produce and local goods	(Ambient: wooden floor creaks, quiet background work noises)
ECU close-up of produce textures and different items	SFX: soft rustle of bags or jars
WS inside the barn showing displays of products and all the decor	Ambient: light creaking, subtle farm sounds outside
CU detail shot of decor	Music softens and fades slightly
WS closing shot of the farm exterior with path leading to exit	(Fade music up) (Fade music and ambient out)

FADE TO BLACK

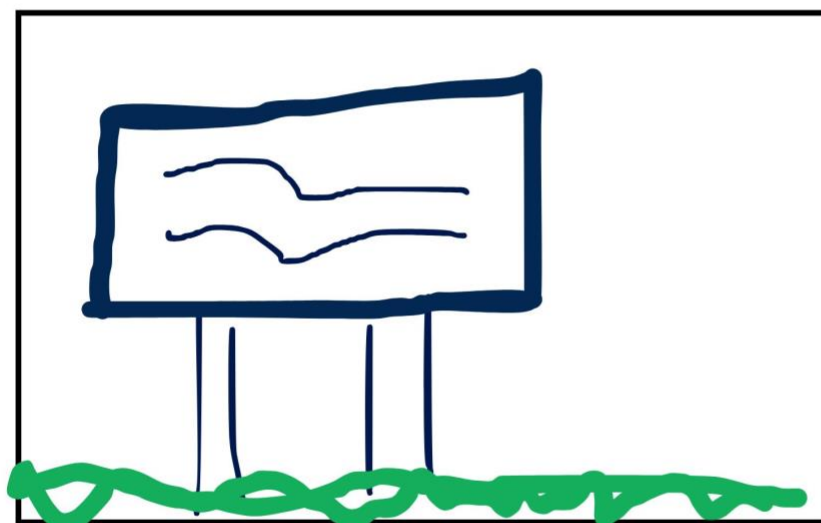


Establishing Shot

Shot Type: WS

Static or slow pan

Farm entrance with
fields and barn

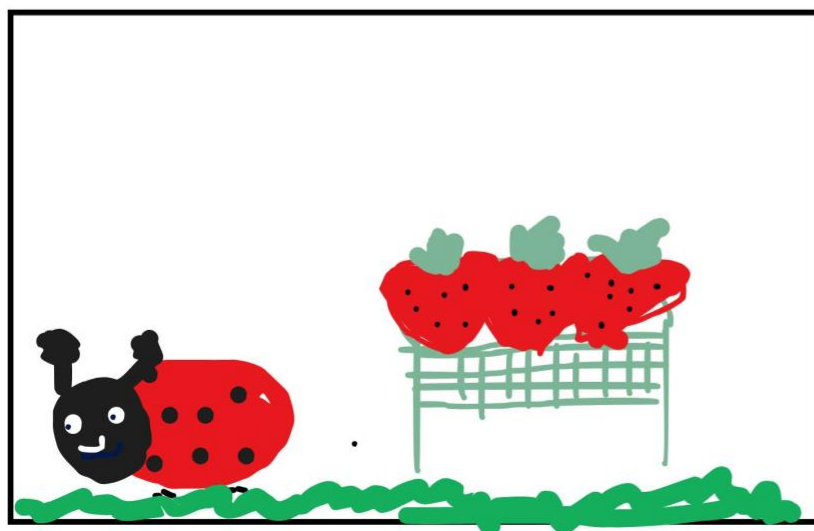


Farm Sign

Shot Type: CU

Zoom in or handheld walking

“Beaumont Farms” sign
surrounded by greenery



Outdoor Statues (multiple)

Shot Type: WS and MS

Slow panning

Showing statue pieces,
and different seasonal
outdoor features

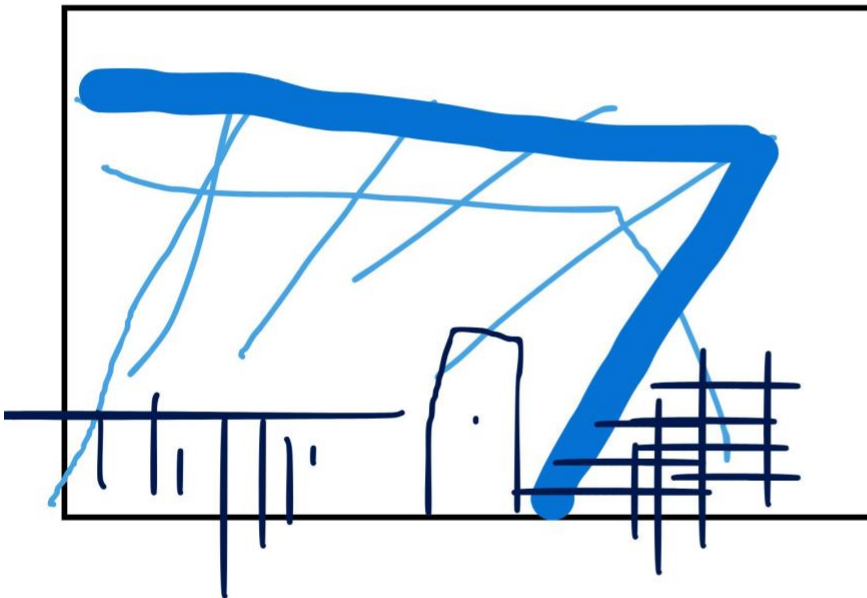


Statue Detailing

Shot Type: CU/ECU

Static or slow pan

Focus on specific statue, textures, detailing, looks

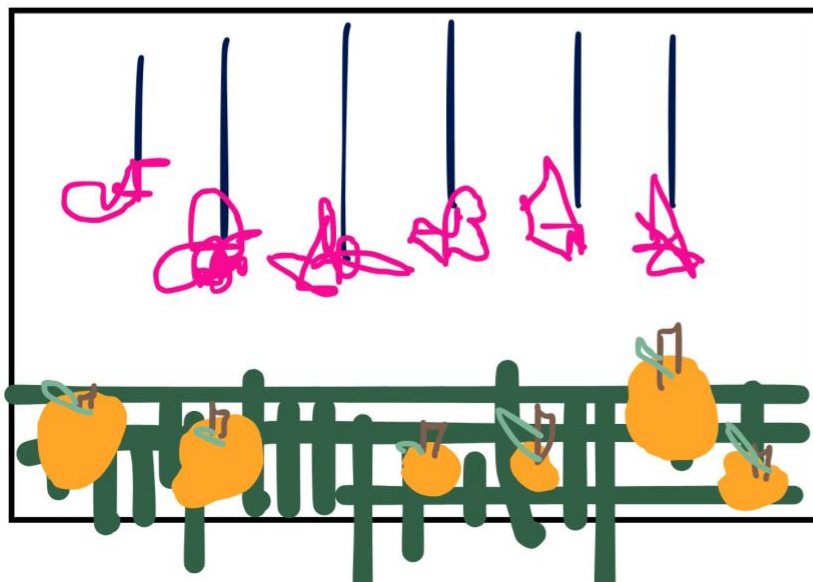


Greenhouse Exterior

Shot Type: WS

Slow pan or static shot

Greenhouse surrounded by plants and other tools and farm equipment

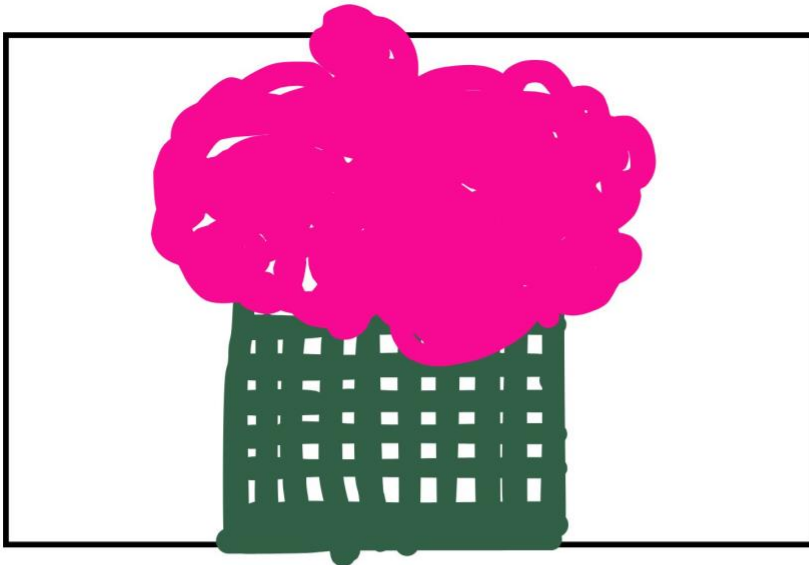


Inside Greenhouse

Shot Type: WS and MS

Slow movements through aisles

Rows of colorful flowers and hanging flowers



Plant Detail

Shot Type: ECU

Static

Focus on plant texture
and lighting, any moisture
on the plants

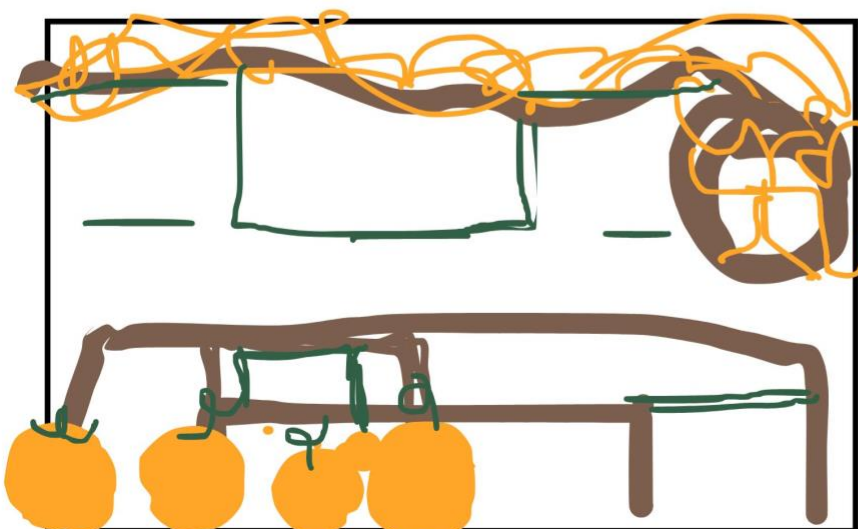


Farmers Stand Exterior

Shot Type: WS

Slow pan or static shot

Outside of the small barn
shop with plants or
signage near by-the
outside decor

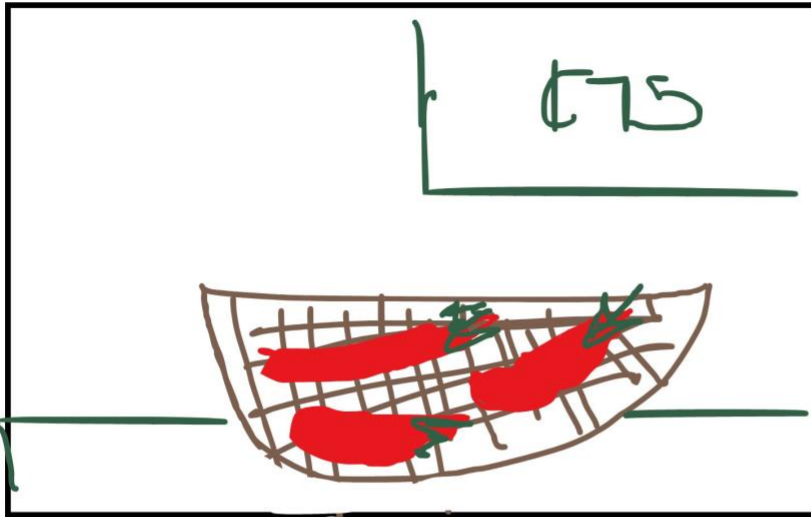


Inside Farmers Stand

Shot Type: MS to WS

Slow panning across displays

Wooden shelves, produce
baskets, lighting in the
barn

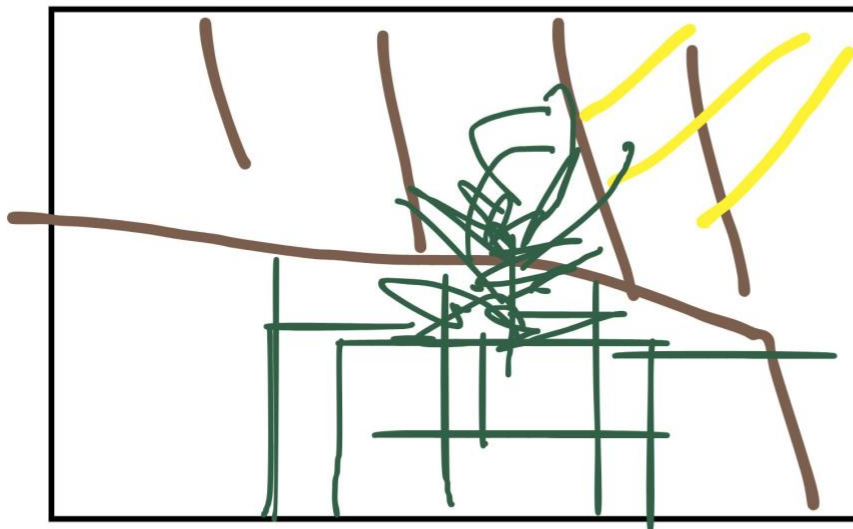


Product Detail

Shot Type: CU/ECU

Panning, static,
potentially handheld?

Focus on plant texture
and lighting, any moisture
on the plants

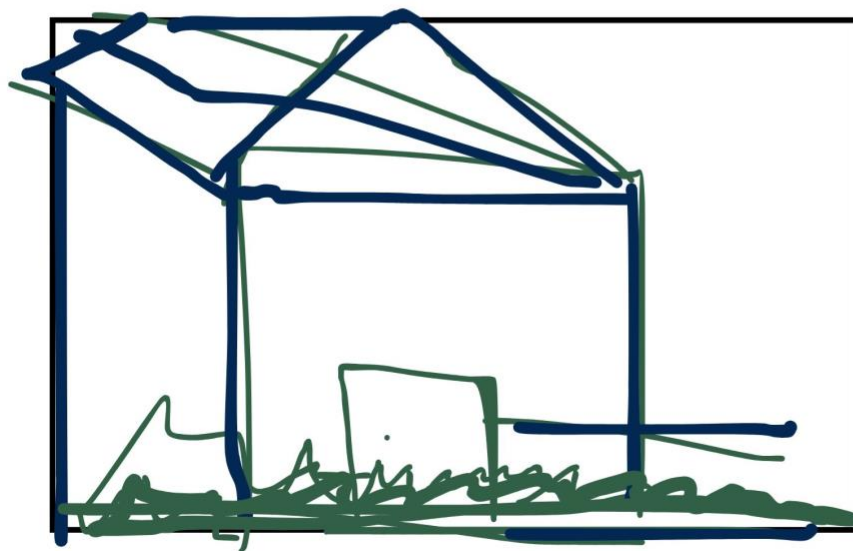


Sunlight Through Barn Window

Shot Type: CU

Static

Light inside the barn,
showing objects with the
lights reflection



Closing Shot

Shot Type: WS

Slow pan or zoom out

View of farm from a
distance panning over
everything